

Massachusetts
Department
of
ENVIRONMENTAL
PROTECTION

Massachusetts Department of
Environmental Protection
One Winter Street
Boston, MA 02108-4746

Commonwealth of
Massachusetts
Jane Swift, Governor

Executive Office of
Environmental Affairs
Bob Durand, Secretary

Department of
Environmental Protection
Lauren A. Liss, Commissioner

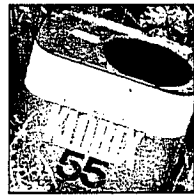
Produced by the
Bureau of Resource Protection,
January 2002
Printed on recycled paper.

This information is available in
alternate format by calling our
ADA Coordinator at
(617) 574-6872.

fact sheet

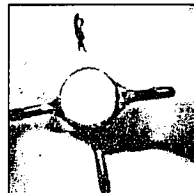
How can I protect drinking water sources?

Residents Protect Drinking Water



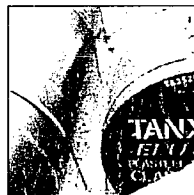
Household Hazardous Waste

- ✓ Participate in Household Hazardous Waste Collection days or centers for used oil, antifreeze, paints, and other chemical disposal.
- ✓ Substitute less hazardous substances for products used in the home. See also <http://www.mass.gov/dep/recycle/hproduct.htm>



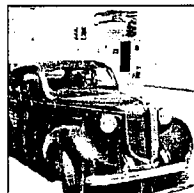
Septic systems

- ✓ Never dispose of household hazardous waste to your septic system.
- ✓ Prevent failed septic systems by locating system components, maintaining, and inspecting your system regularly. See also www.mass.gov/dep/brp/files/yoursyst.htm.



Underground and Aboveground Storage Tanks

- ✓ Upgrade fuel oil tanks to include proper containment and safety measures. Consult with the fire department before making changes, as any changes must comply with plumbing, building, and fire codes.
- ✓ Catch costly leaks by inspecting fuel lines and keeping a fuel log.



Car Care

- ✓ Check your car for oil leaks, and repair leaks quickly.
- ✓ Dispose of waste oil properly, never in drains or on the ground. Recycle oil at a car care center or hazardous waste center. See also www.epa.gov/region01/eco/lis/posters/oil.html.



Lawn Care and Landscaping

- ✓ Apply pesticides and fertilizers minimally and properly. More information on environmentally sound lawn care is available at www.massdfa.org/pesticides/publications/index.htm and www.epa.gov/region01/eco/lis/posters/lawn.html



Pet Waste

- ✓ Don't walk your pet near wells or reservoirs. Encourage the creation of pet waste stations for waste disposal in parks.
- ✓ Practice proper pet waste disposal, picking up after your pet and preferably flushing waste, or disposing of waste in the garbage. See also www.epa.gov/region01/eco/lis/posters/pet.html

Do you already do all of this and want to do more to protect your drinking water?
Contact your local water supplier to volunteer.