

TOWN OF BELLINGHAM

OFFICE OF THE DIRECTOR DEPARTMENT PUBLIC WORKS
26 BLACKSTONE STREET
BELLINGHAM, MA 02019
(508)-966-5813
FAX (508)-966-5814

BELLINGHAM DEPARTMENT OF PUBLIC WORK WATERWORKS SPECIFICATIONS

August 2019

HYDRANTS:

- 5 ' OR 5 1/2 ' BURIED **OPEN LEFT**
- MUELLER SUPER CENTURION 41/2" Valve Opening
- KENNEDY GUARDIAN K-81A 41/2" Valve Opening
- DARLING B-84-B 51/4" Valve Opening

VALVES:

- NON RISING STEM **OPEN LEFT**, AWWA APPROVED
- MUELLER - KENNEDY - DARLING EPOXY COATED
- MUELLER RESILIENT SEAT EPOXY COATED

MAIN PIPE:

- DUCTILE IRON CEMENT LINED - PRESSURE CLASS 350 OR CLASS 52
 - POLYETHYLENE PIPE WRAP IS REQUIRED IF INSTALLED BELOW TYPICAL HIGH WATER TABLE.

HOUSE SERVICE:

- P. E. TUBING 200 PSI UHMW
- CORPORATION - MUELLER - MC DONALD - RED HED CC x COMPRESSION
- CURB SHUT OFF - MUELLER - MC DONALD - RED HED FLARE X COMPRESSION, without bleeders.
- 5' - 51/2' CURB BOX WITH 30" ROD WITH 2 HOLE COVER. PLUG TYPE COVERS NOT PERMITTED

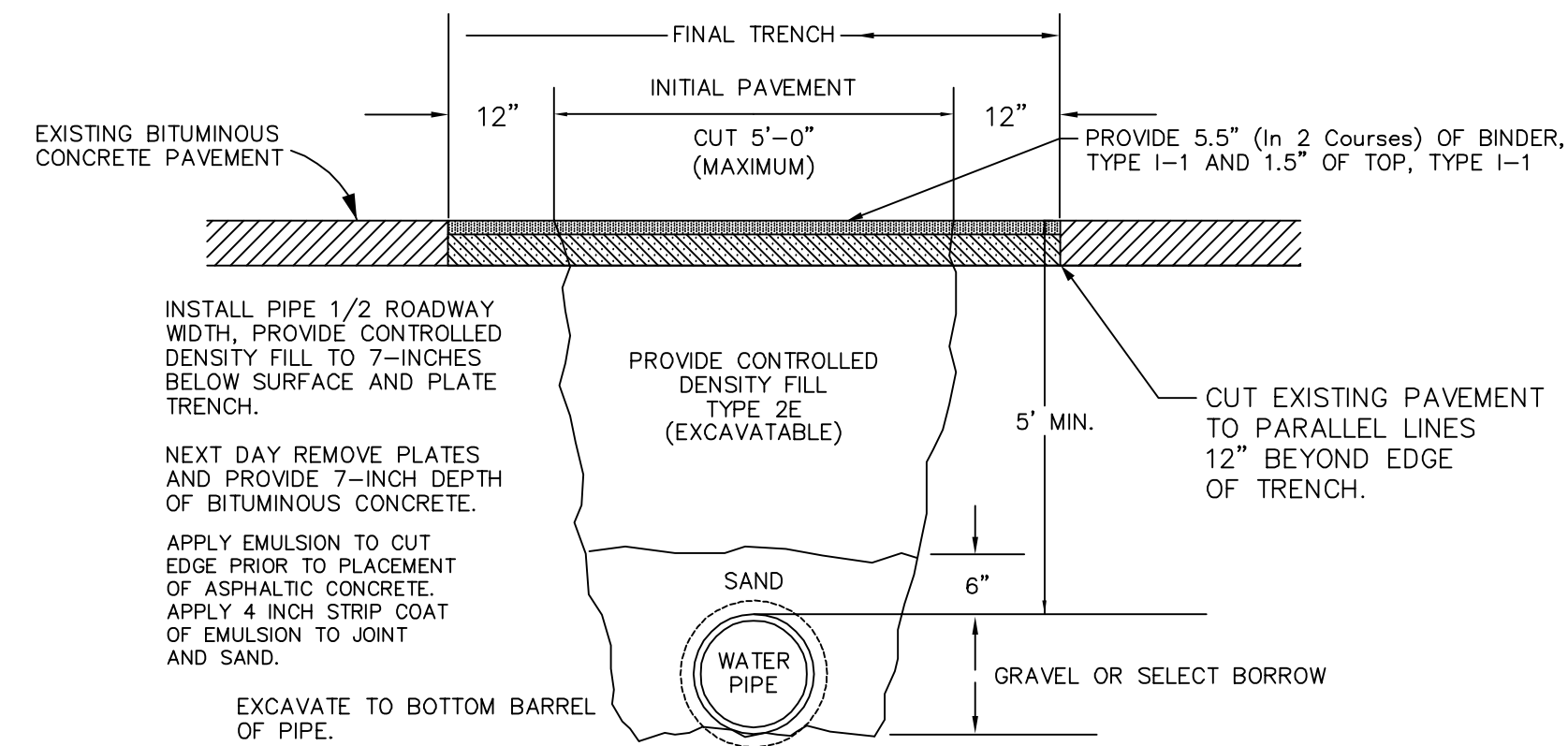
WATER SERVICE METER:

- Typical residential / commercial domestic use
 - INVENSYS iPERL 5/8 x 3/4" GALLON REGISTER with MXU (RADIO READ) W/ TOUCH PAD.
- Commercial / Industrial
 - Sensus Omni meter (Size per specific application approval) GALLON REGISTER with MXU (RADIO READ) W/ TOUCH PAD.
- ALL METERS ARE THE PROPERTY OF THE PROPERTY OWNER

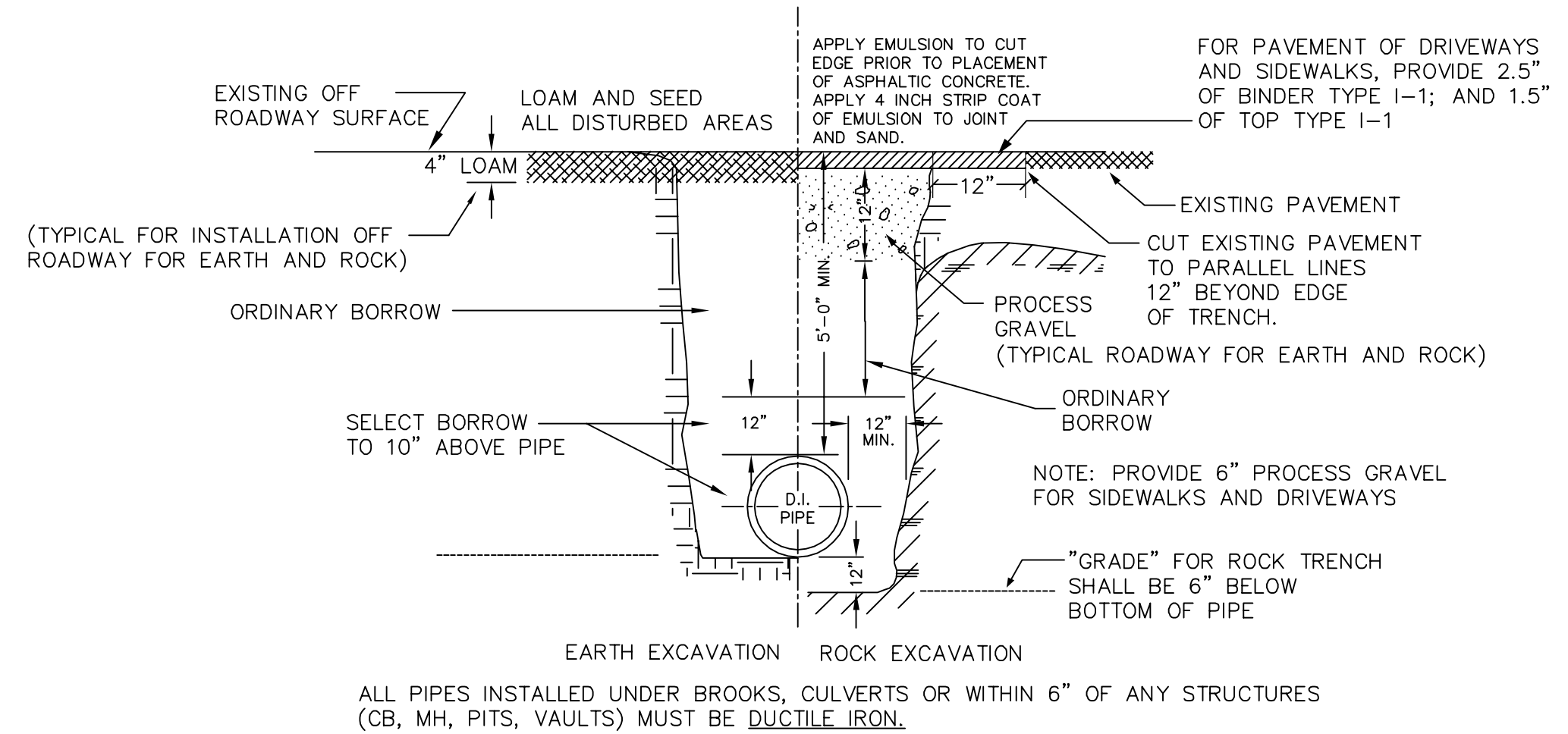
METER FITTINGS:

- WATTS or APOLLO BALL VALVE - TEFLON COATED
- STRAIGHT METER COUPLING - MUELLER, MACDONALD, or RED HED
- BENDS – COMPRESSION X MALE THREAD

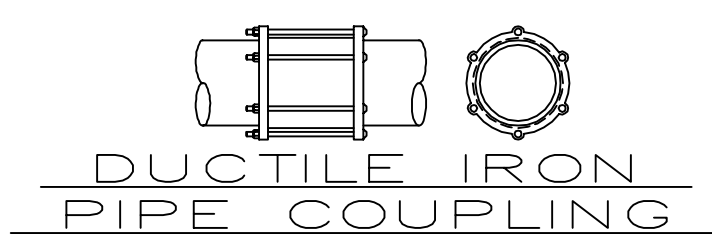
1. ALL NEW WATER MAINS FROM 6" THRU 12" DIAMETER SHALL BE DUCTILE IRON PRESSURE CLASS 350 PIPE.
2. TEFLON TAPE SHALL BE REQUIRED FOR ALL DIRECT TAPS
3. NO DIRECT TAPS GREATER THAN 1" SHALL BE ALLOWED ON 6" THRU 12" DIAM. PIPE
4. ANY BRANCH OR SERVICES LARGER THAN 1" MUST BE ACCOMPLISHED BY INSTALLATION OF APPROPRIATE DUCTILE IRON FITTING



TYPICAL TRENCH RESURFACING
IN STATE HIGHWAY & ON MAIN ROADS

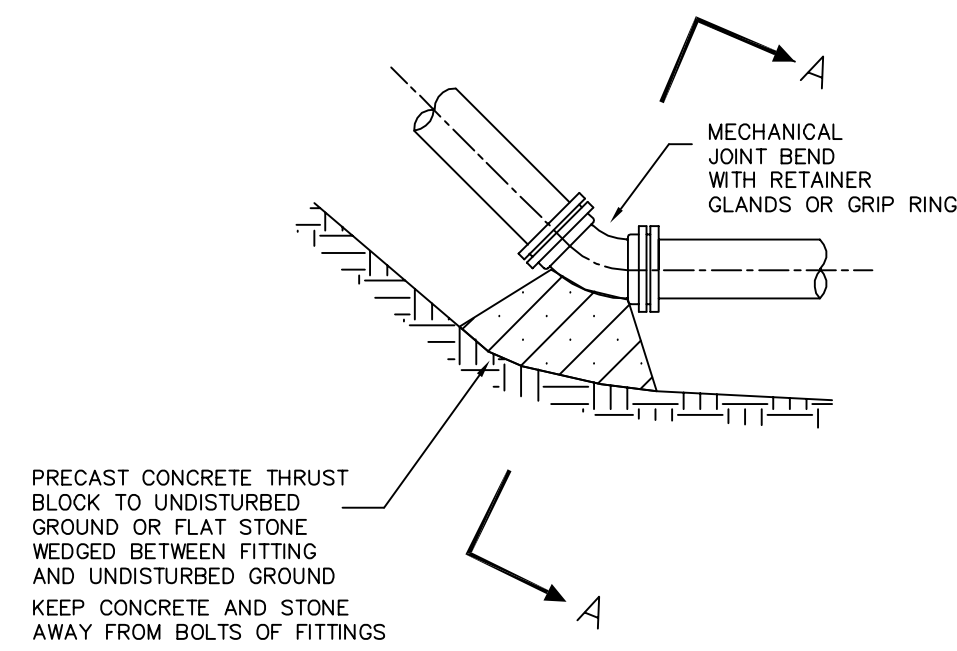


TYPICAL TRENCH SECTION
FOR DUCTILE IRON WATER MAINS

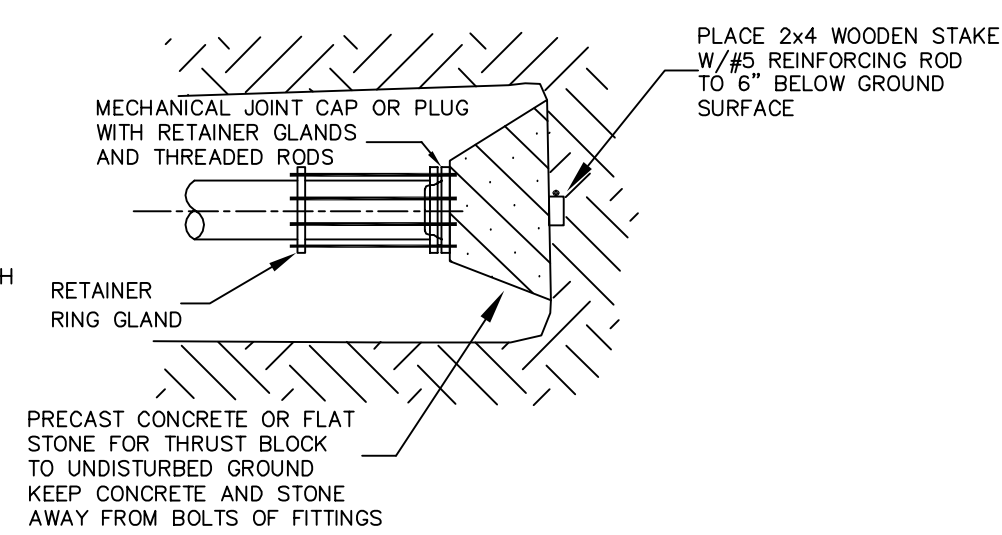
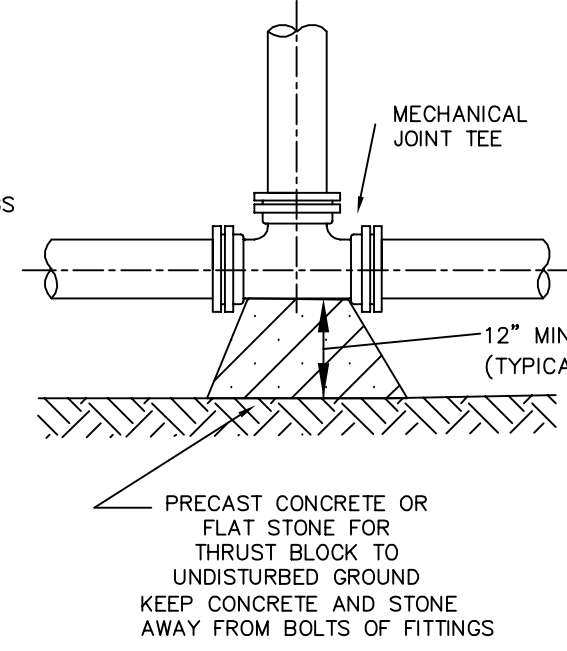


TAPPING SLEEVE & VALVE

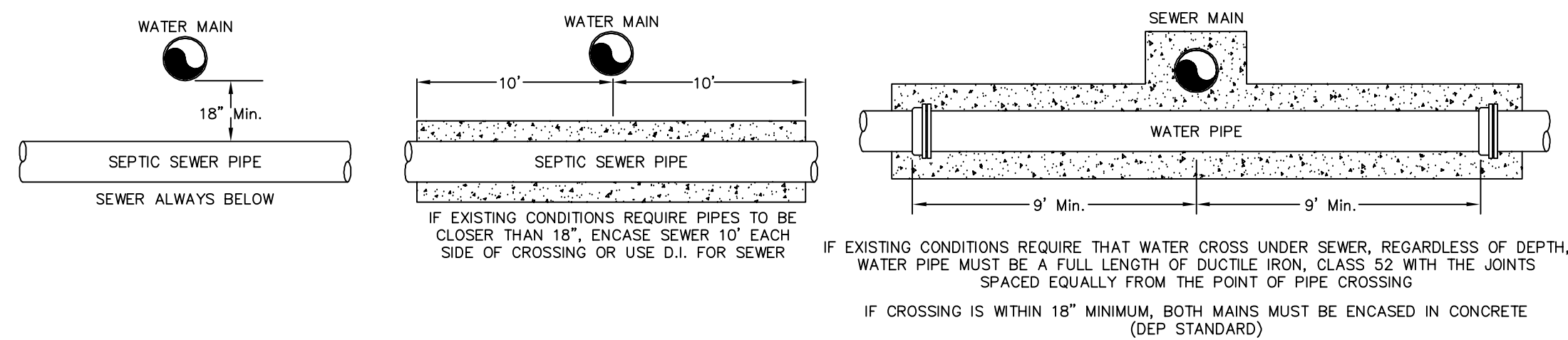
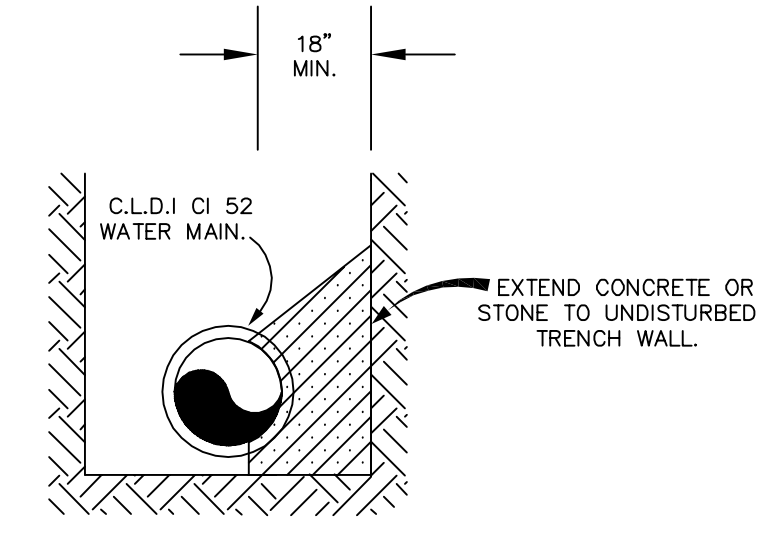
NOTE:
ALL MAIN LINE VALVES - (OPEN LEFT, NON RISING STEM)
SIZES 3" TO 12" - (GATE VALVES)
SIZES GREATER THAN 12" - (BUTTERFLY VALVES)
MUELLER - KENNEDY - DARLING - EPOXY COATED
MUELLER RESILIENT SEAT EPOXY COATED, AWWA APPROVED



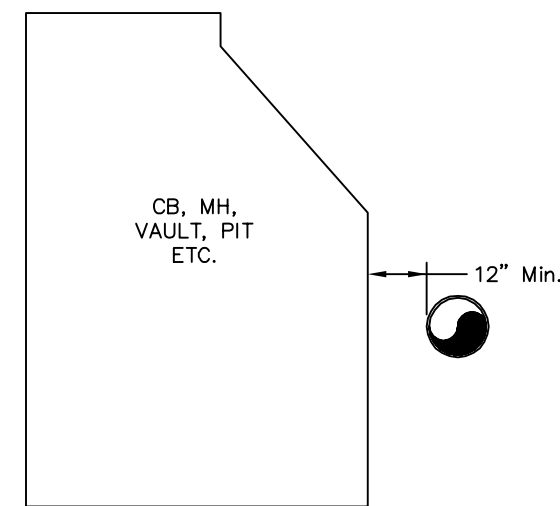
TYPICAL THRUST BLOCK DETAILS



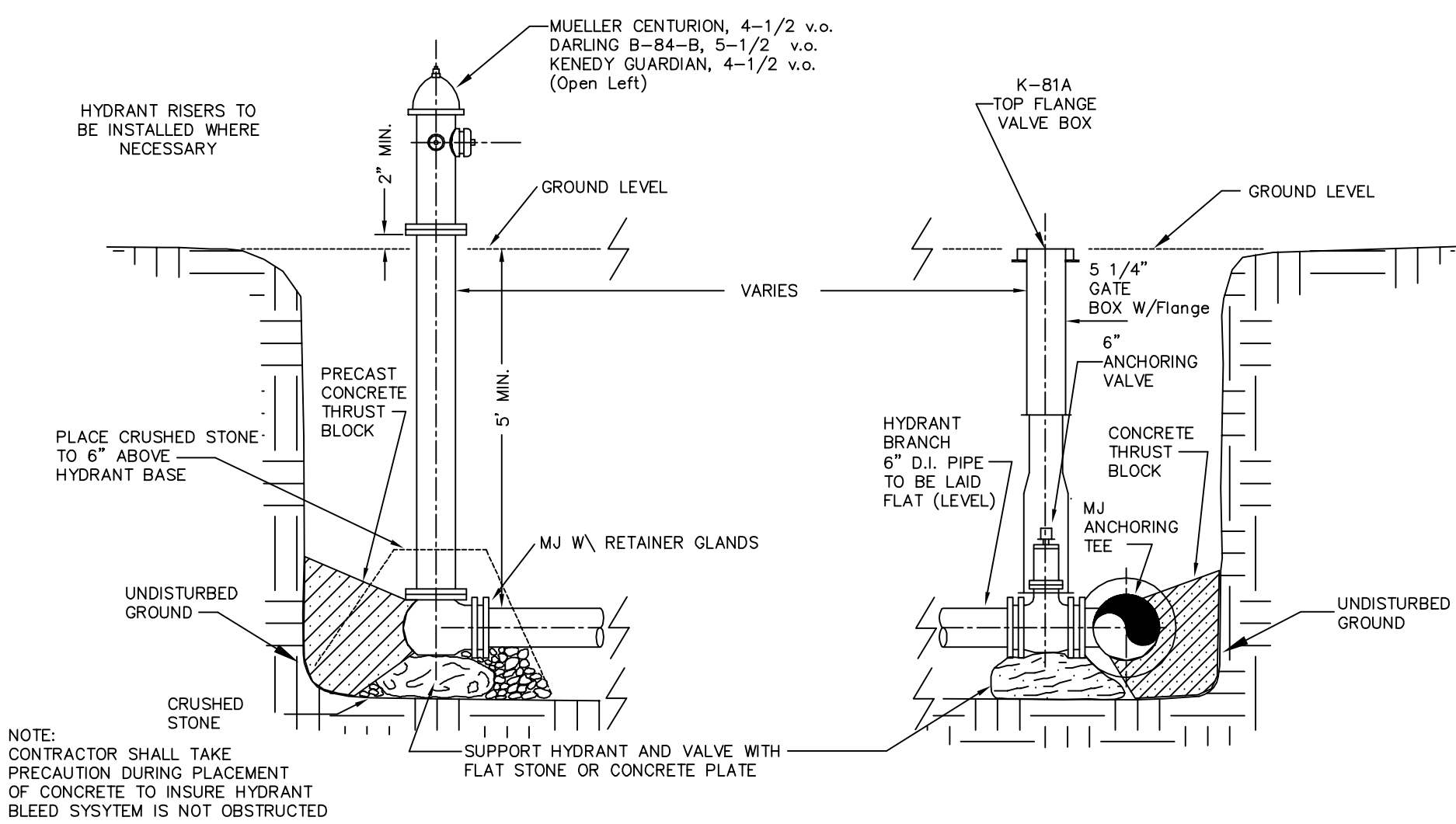
SECTION A-A
NOT TO SCALE



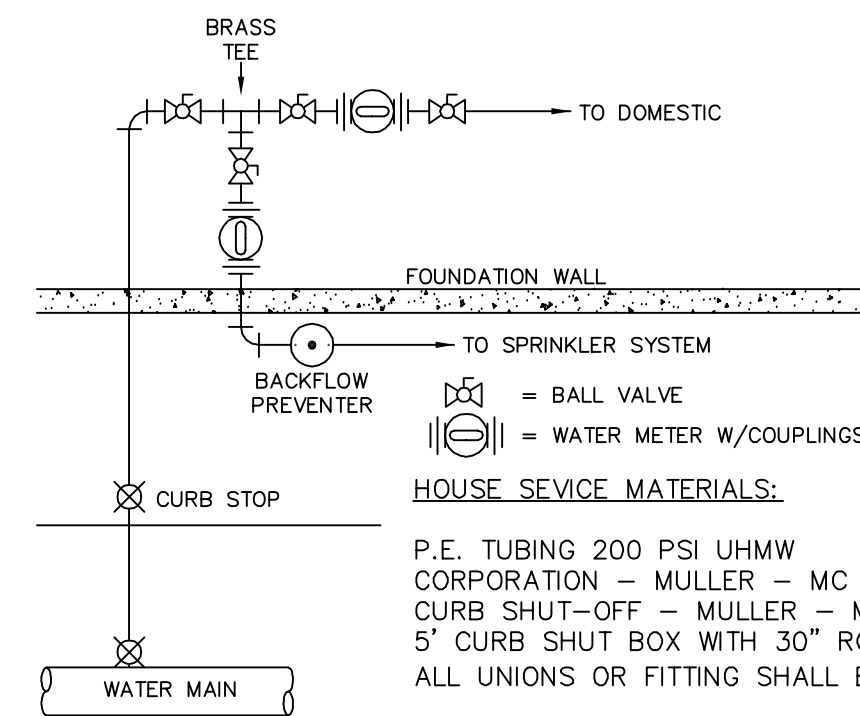
WATER / SEWER CROSSINGS



WATER PIPE CLEARANCE TO STRUCTURES



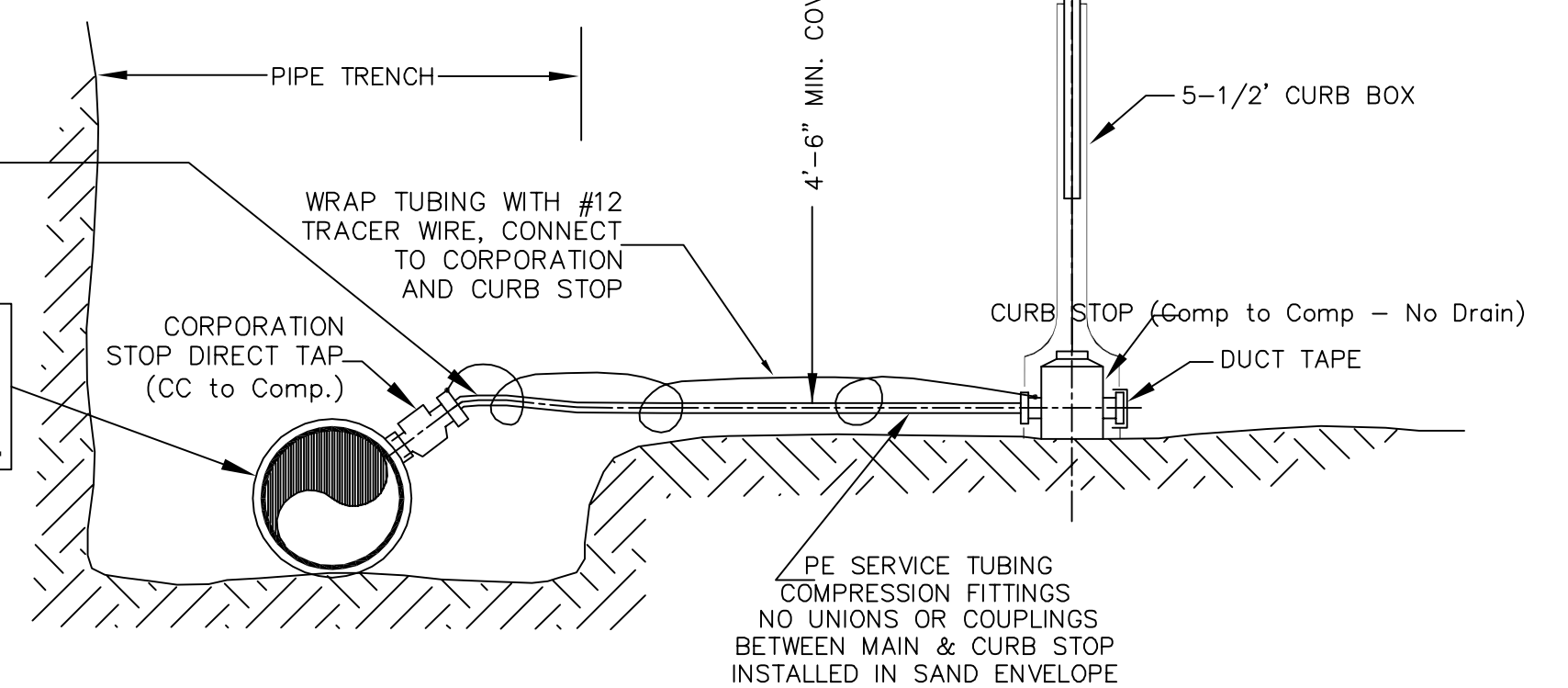
TYPICAL HYDRANT INSTALLATION



WATER SERVICE CONNECTION
WITH
SECOND METER
(LAWN SPRINKLER SYSTEMS)

**TEFLON TAPE SHALL BE
ADDED TO ALL NEW
WATER SERVICES**

**ALL NEW WATER MAINS SHALL BE
PRESSURE CLASS 350 DUCTILE IRON
EFFECTIVE MARCH 1, 2014**



TYPICAL SERVICE CONNECTION
SEE SPEC. SHEET

TOWN OF BELLINGHAM, MASSACHUSETTS
DEPARTMENT OF PUBLIC WORKS

Haley and Ward, Inc.
25 FOX ROAD
WALTHAM, MASSACHUSETTS 02451

AND APPERTENANCES

SHEET NO.:	1	1	BY
CONTRACT NO.:	X	1	DATE
SCALE:	NONE	REVIEWED	DATE
DATE DRAWN:	NOVEMBER, 2000	Del Flores	9/25/2007
DRAWN BY:	GPF	Del C-900	3/1/2012
FILE NO.:	DET-A	PCF DI-350	3/1/2014
			J HARTE
			D Dimartino
			D Dimartino
			D Dimartino

DWG. NO.